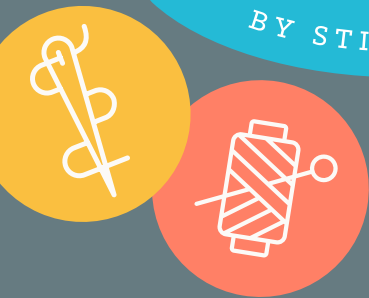




TEXTILEARTIST.ORG
Stitch
— CAMP —
BY STITCH CLUB



Stitch Camp

Day five workbook



TextileArtist.org



TextileArtist.org Stitch Camp

Day five workbook

What next?

So far

- You've chosen a colour scheme
- You've marked two cloths with paint
- You marked the first cloth with fairly dense areas of colour
- On the second cloth, you made less dense marks, leaving more areas of negative space
- You've selected and cut patches from your two marked cloths
- And you've pieced together those patches to create an entirely new design
- You've blurred the boundaries of your patched together cloths and enhanced visual links from patch to patch using simple hand stitch
- And you've added an extra layer of interest and personalisation with appliqué and paint

Today

You'll back and edge your work, and explore some options for developing new work using Gwen's process.



TextileArtist.org Stitch Camp

Day five workbook

Today's exercise



Add a backing to your work

- You can back the work with fabric in any of your chosen colours, but don't use a painted cloth as it will be too thick.
- The backing fabric needs to be 3cm / 1¼" longer and wider than the piece, to provide an allowance for turning in.
- Place your work face down onto a folded towel. Lightly spray with water or cover with a damp cloth. Iron the work gently. This will flatten the fabric, but not your surface stitching.
- Lay the backing fabric face down. Place your work on top, face up. Tack the backing fabric in place, centrally along its length.
- Fold the sides of the backing fabric up and over the front of work along the longest edge, on both sides, and press firmly with your fingers to make a crease. Tuck in these folded flaps behind the work. Tack along both of the long sides, 1cm / ¼" away from the edge.
- Fold and pin both of the short ends in the same way and hold them in place with pins or tacking.



TextileArtist.org Stitch Camp

Day five workbook



Edge your work

- Stitch all around the edges.
- Consider how you want your edges to look. They could be a uniform colour, to create a strong border. Or you could colour-match the thread to each section of the cloth, so that it blends in.
- Use overstitch, buttonhole stitch, or any other preferred stitch.
- When you have edged the work, remove any tacking stitches holding the backing in place.
- As an alternative finishing option, you could stitch the finished artwork onto a larger piece of fabric, and allow your stitching to extend beyond the edges of the patches, going onto the background fabric.



TextileArtist.org Stitch Camp

Day five workbook

Other ways to finish and display your work



Create a work to be wall hung or framed, as *Marilyn Thiesel* has done.



TextileArtist.org Stitch Camp

Day five workbook



Stitch your work onto a larger piece of cloth, then break the boundaries of the piece with stitch, as *Joekie Blom* has done.



Create a trio of wall hangings, as shown in this work by *Janet Wheeler*.



TextileArtist.org Stitch Camp

Day five workbook



If you have made a strip, attach it and wrap it round a spool to display, as *Jill Rose Brennan* has done.



When you add the backing, insert a wire between the backing fabric and the artwork, on both of the long edges. Secure it in place with your edging stitches. You can then bend the wire into a sculptural shape, as *Wendy Haydock* has done.

Or maybe you have ideas of your own?

